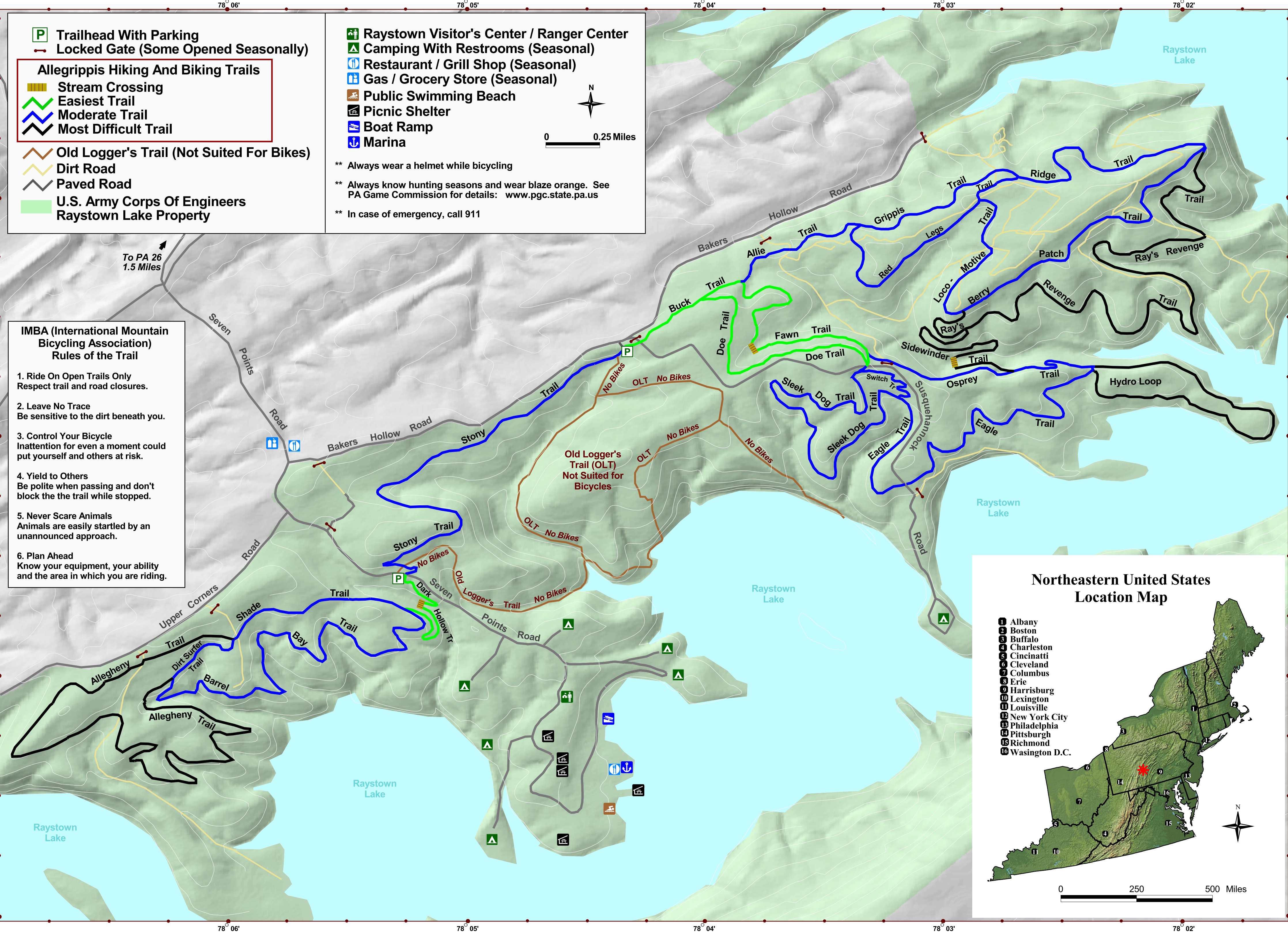




Allegrippis Trail System

Hiking And Biking Trails
In Cooperation With The Friends Of Raystown Lake



Trailhead With Parking
Locked Gate (Some Opened Seasonally)

Allegrippis Hiking And Biking Trails

- Stream Crossing
- Easiest Trail
- Moderate Trail
- Most Difficult Trail

Old Logger's Trail (Not Suited For Bikes)
 Dirt Road
 Paved Road
 U.S. Army Corps Of Engineers Raystown Lake Property

- Raystown Visitor's Center / Ranger Center
- Camping With Restrooms (Seasonal)
- Restaurant / Grill Shop (Seasonal)
- Gas / Grocery Store (Seasonal)
- Public Swimming Beach
- Picnic Shelter
- Boat Ramp
- Marina

0 0.25 Miles

** Always wear a helmet while bicycling
 ** Always know hunting seasons and wear blaze orange. See PA Game Commission for details: www.pgc.state.pa.us
 ** In case of emergency, call 911

IMBA (International Mountain Bicycling Association) Rules of the Trail

- Ride On Open Trails Only
Respect trail and road closures.
- Leave No Trace
Be sensitive to the dirt beneath you.
- Control Your Bicycle
Inattention for even a moment could put yourself and others at risk.
- Yield to Others
Be polite when passing and don't block the the trail while stopped.
- Never Scare Animals
Animals are easily startled by an unannounced approach.
- Plan Ahead
Know your equipment, your ability and the area in which you are riding.

